

ENGINE

Power output (acc. to ISO 1585)	191 kW (260 HP)
Net brake power	183 kW (249 HP)
Manufacturer	Deutz
Type	BF6M 1013 FC
Piston displacement.....	7150 cm ³
Max. rpm	2000 min ⁻¹
Charging	turbocharger/intercooler

HYDRAULIC

Computer controlled AVE5 system with two load limit controlled high performance piston pumps • tandem-style axial piston pumps • fuel saving oil supply on demand • sensitive, proportional and load independent control of all movements, independently acting from pilot pressure or r.p.m. • warm-up phase • thermostat controlled oil-temperature • cooler with fan in the separate cooling circuit • primary and secondary safeguarding of the hydraulic system against overload • anti cavitation valves for all working functions, throttle control in the lifting and folding circuit • Load – holding valves and subtile acting lowering valves in the lifting circuit

Hydraulic system	2xAKP
Main pump	A20 VLO 190
Max. gear pump output.....	2 x 380 l/min
Max. operating pressure.....	380 bar

MANAGEMENT

AEM ATLAS EXCAVATOR MANAGEMENT • supervision and control of all electronic functions • electronic diesel engine governor (EMR) • load limit control (GLR) • LCD showing operating data • immobilizer • error indicator • automatic check of functions when system is activated

NOISE LEVEL

Noise level* well below EU limits

Outside cab (LwA)	107 db (A)
Inside cab (LpA)	70 db (A)

*dynamic noise measurements acc. 2000 / 14 EU regulations

ELECTRICAL SYSTEM

Operating voltage	24 Volt
Cold-start high performance batteries	2 x 143 Ah

BRAKES

Twin-circuit system.....	multi disc type
Parking brake	spring loaded type

TANK VOLUMES

Fuel tank.....	920 l
Hydraulic tank	720 l
Engine oil tank	21 l

KABINE

Variocabin allowing 3m lift and 3m forward movement • shock absorbing resilient mountings • heat insulated panoramic windows for best all around visibility • no glare interior • air condition • ergonomic control levers • forward and reverse seat adjustment independent of the control panel • fold away arm rest on the left side • up and over windscreen lockable under roof panel • sliding window in cab door

Model.....	ATLAS comfort cab model 1000
Total length.....	1800 mm
Width	1000 mm



SLEWING MECHANISM

Slewing mechanism with dual-drive

Slew motor.....	Axial piston with priority valve
Slew gear box.....	planetary gearing
Slew brake.....	lockable multi disc

Drive internally toothed

Slewing speed.....	5,2 min ⁻¹
Slewing torque.....	164 kNm

DRIVE

70to special excavator axles with planetary gears in all four wheel hubs • all wheel drive • variable speed motor • double acting travel brake valve • select driving direction via push button on the right hand joy-stick • steering axle with automatic blocking of the pendulum axle • accelerator pedal control • steering via potentiometer (no steering wheel) and joy-sticks with push button (for offroad driving)

TRAVELLING SPEED

Inching	max. 1,0 km/h
Off-road (infinitely)	max. 5,0 km/h
On-road (infinitely)	max. 16 km/h

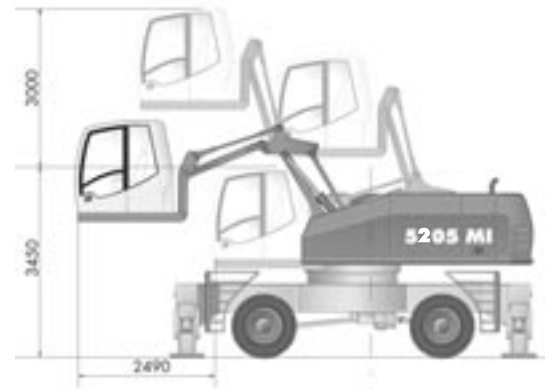
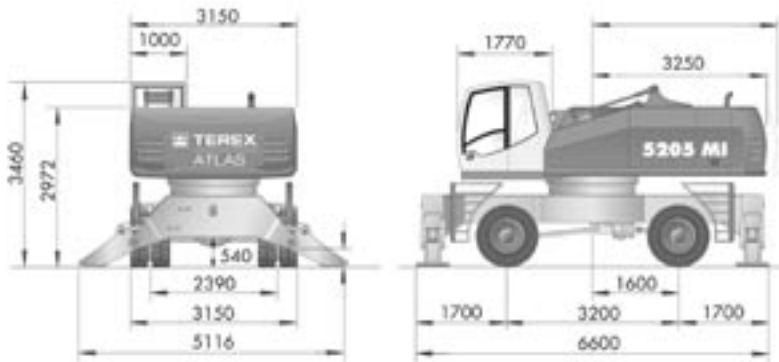
TYRES

8-foldh	SE12.00 - 24
Turning radius	8.9 m

OPERATION WEIGHT

Operation weight.....	50 - 52 to
-----------------------	------------

PRINCIPAL DIMENSIONS



Vario cabine

BOOM SYSTEMS



Monobloc	C 94.5 i	Effective length 9800 mm with jib
Jib	D 94.15 i	Effective length 7500 mm

Monobloc	C 94.6 i	Effective length 12100 mm with Jib
Jib	D 94.16 i	Effective length 9240 mm

EQUIPMENT

Basic unit

A 94.32	ATLAS fully hydraulic mobile excavator 5205 M with four-fold stabilizers and two lift rams	Weight/kg 42850
----------------	--	--------------------

Additional equipment

B 94.9	Hydraulic installation for mobile excavators in order to be able to switch the front and rear stabilizers individually	
B 94.9b	Hydraulic installation for mobile excavators in order to be able to switch four stabilizers individually	40

Main boom

C 94.5 i	Monoblock boom with two lateral jib rams effective length 9800 mm	4000
C 94.6 i	Monoblock boom with two lateral jib rams effective length 12100 mm	4350
C 94.6 iB	Monobloc boom, elbowed, with two articulated cylinders on the side, working length 12100 mm	4350

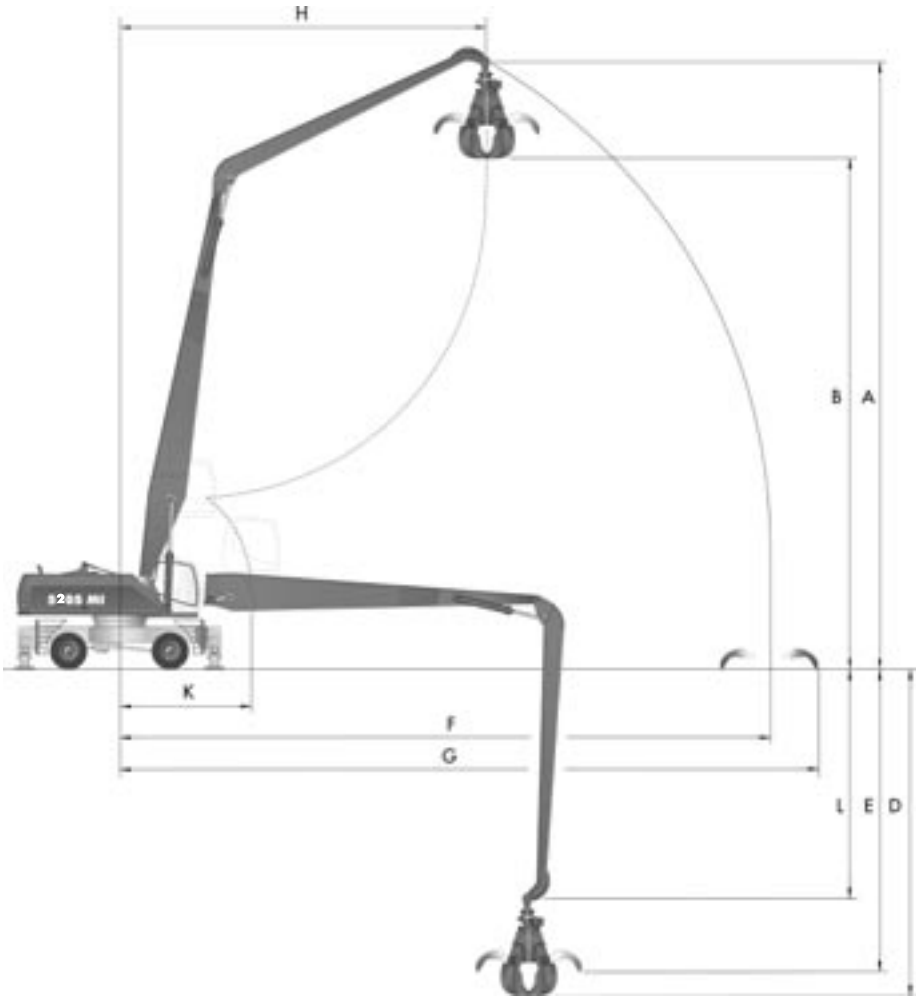
Jibs

D 94.15 i	Jib suitable for C 94.5 i, effective length 7500 mm	2150
D 94.16 i	Jib suitable for C 94.6 i, effective length 9240 mm	2400

Standard equipments

- AEM ATLAS EXCAVATOR MANAGEMENT
- Excavator electronics
- LCD showing operating data
- Climatronic
- Travelling with foot pedals
- Automotive movement
- Pre-selected direction on the pilot control lever
- Automatic idle running (diesel engine)
- Pressure switch-on
- Sliding window in the cab door
- Heat-resistant shade-lite glass panes
- Windscreen can be pushed under the cab roof
- Steering column, tilting and height continuously-adjustable
- Arm bracket can be lifted and lowered
- Comfort seat with arm rests and lumbar support
- Forward and reverse seat adjustment independent of the control panel
- Cab prepared for radio installation
- Battery main switch in the negative wire
- Pressure reservoir for emergency lowering of the arm system
- Central lubrication point
- Sealed pivot points in the base arm
- Grab handle to suspend the grab while driving on the road
- Intermediate rings between the tyre pairs
- Toolbox in undercarriage
- Power shift gear
- Windscreen washer
- Hydraulic installation set for grab operation and for grab slewing operation (grab rotation NW 16)
- Valve assembly on the boom mounted for the attachment of additional valves
- Pipe-break safety device for the lifting cylinders with an overload warning device
- Automatic slewing gear brake

ATLAS 5205 MI



Equipment: A 94.32, C 94.5i, D 94.15i, E 94.50

Jib D 94.15i - Effective length 7500 mm

Orange peel grab

A	Jib height	mm	16000
B	Dumping height	mm	12950
F	Max. length of jib	mm	16700
G	Max. outreach	mm	18150
H	Max. outreach length	mm	9500
K	Min. length of jib	mm	3900
L	Bucket pivot	mm	5300
E	Max. open grab	mm	7400
D	Max. digging depth	mm	8400
	Operating weight	t	50.90

Equipment: A 94.32, C 94.6i, D 94.16i, E 94.50

Jib D 94.16i - Effective length 9240 mm

Orange peel grab

A	Jib height	mm	19100
B	Dumping height	mm	16050
F	Max. length of jib	mm	20400
G	Max. outreach	mm	21850
H	Max. outreach length	mm	11500
K	Min. length of jib	mm	4600
L	Bucket pivot	mm	7200
E	Max. open grab	mm	9200
D	Max. digging depth	mm	10250
	Operating weight	t	51.85

Equipment A 94.32, C 94.5i

Jib D 94.15i - Effective length 7500 mm

Hook height m	7.5 m		9.0 m		10.5 m		12.0 m		13.5 m		15.0 m		16.5 m	
	long.	lat.	long.	lat.	long.	lat.	long.	lat.	long.	lat.	long.	lat.	long.	lat.
15	a	-	-	-	7.9	7.9	-	-	-	-	-	-	-	-
	b	-	-	-	7.9	6.9	-	-	-	-	-	-	-	-
12	a	-	-	-	7.7	7.7	7.2	7.2	6.8	6.8	-	-	-	-
	b	-	-	-	7.7	7.1	7.0	5.6	5.7	4.5	-	-	-	-
9	a	-	-	-	8.1	8.1	7.4	7.4	6.9	6.9	6.5	6.5	-	-
	b	-	-	-	8.1	6.9	6.9	5.5	5.6	4.4	4.7	3.6	-	-
6	a	11.9	11.9	10.2	10.2	8.9	8.9	8.0	8.0	7.3	7.3	6.7	6.7	-
	b	11.9	10.6	10.2	8.0	8.1	6.3	6.5	5.1	5.4	4.2	4.5	3.5	-
3	a	14.5	14.5	11.8	11.8	10.0	10.0	8.7	8.7	7.7	7.7	6.9	6.9	6.2
	b	11.7	9.0	9.1	7.0	7.4	5.7	6.1	4.7	5.1	3.9	4.3	3.3	3.7
0	a	13.5	13.5	12.7	12.7	10.6	10.6	9.1	9.1	7.9	7.9	6.9	6.9	-
	b	10.5	7.8	8.3	6.2	6.8	5.1	5.6	4.3	4.8	3.6	4.1	3.1	-
-3	a	11.3	11.3	12.4	12.4	10.4	10.4	8.8	8.8	7.6	7.6	6.4	6.4	-
	b	10.1	7.4	7.9	5.9	6.5	4.8	5.4	4.1	4.7	3.5	4.1	3.0	-

Equipment A 94.32, C 94.6i

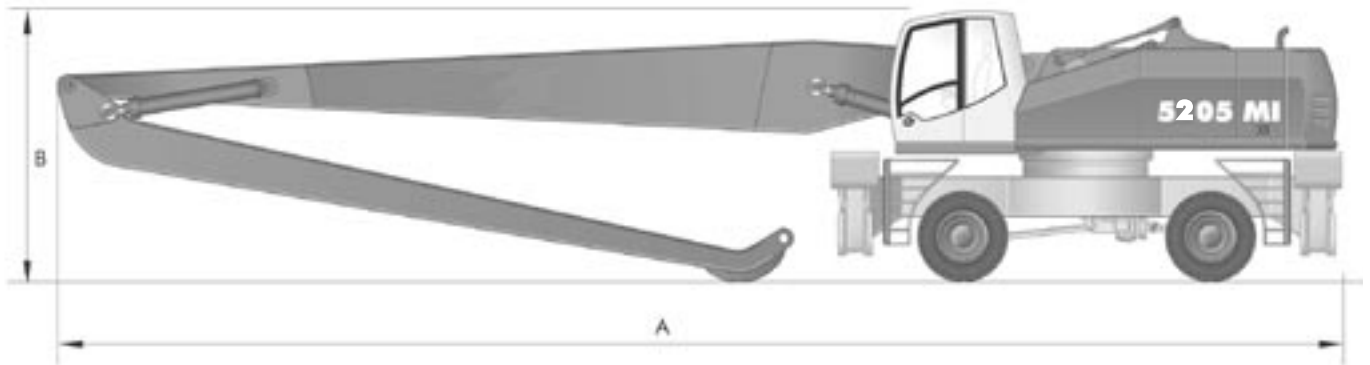
Jib D 94.16i - Effective length 9240 mm

Hook height m	10.5 m		12.0 m		13.5 m		15.0 m		16.5 m		18.0 m		19.5 m	
	long.	lat.	long.	lat.	long.	lat.	long.	lat.	long.	lat.	long.	lat.	long.	lat.
15	a	-	-	-	5.2	5.2	4.9	4.9	-	-	-	-	-	-
	b	-	-	-	5.2	4.6	4.8	3.7	-	-	-	-	-	-
12	a	-	-	-	5.3	5.3	4.9	4.9	4.6	4.6	-	-	-	-
	b	-	-	-	5.3	4.6	4.7	3.7	3.9	2.9	-	-	-	-
9	a	-	-	6.2	6.2	5.6	5.6	5.1	5.1	4.7	4.7	4.4	4.4	-
	b	-	-	6.2	5.3	5.5	4.3	4.5	3.5	3.7	2.8	3.1	2.2	-
6	a	7.7	7.7	6.7	6.7	6.0	6.0	5.4	5.4	4.9	4.9	4.5	4.5	4.1
	b	7.6	5.9	6.2	4.7	5.0	3.8	4.2	3.1	3.5	2.5	2.9	2.1	1.7
3	a	8.5	8.5	7.3	7.3	6.4	6.4	5.7	5.7	5.1	5.1	4.6	4.6	4.1
	b	6.6	4.9	5.4	4.0	4.5	3.3	3.8	2.7	3.2	2.3	2.7	1.9	1.5
0	a	9.0	9.0	7.6	7.6	6.6	6.6	5.8	5.8	5.1	5.1	4.6	4.6	4.1
	b	5.7	4.1	4.8	3.4	4.0	2.8	3.4	2.4	2.9	2.0	2.5	1.7	1.4

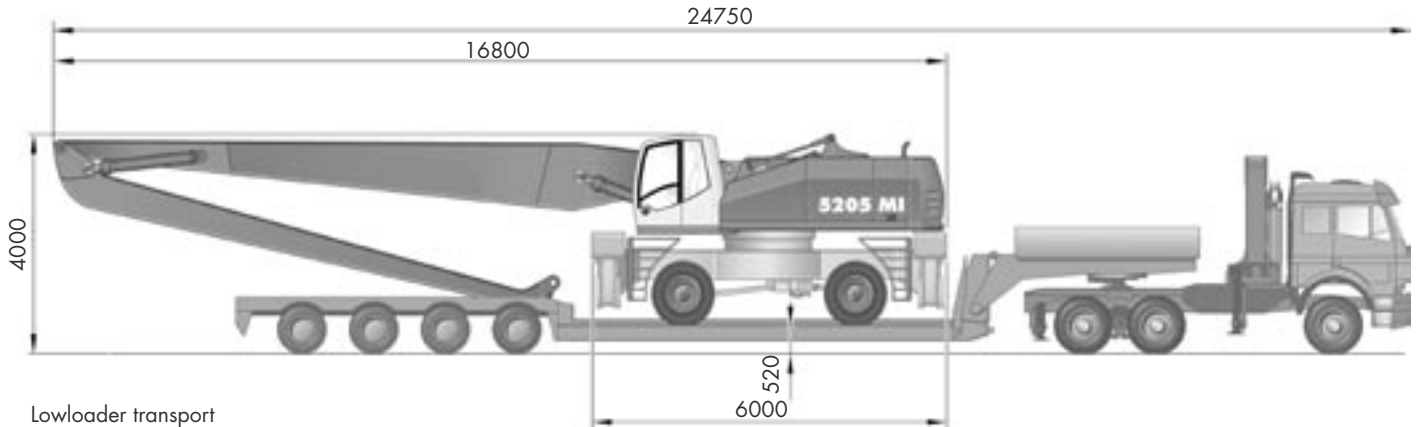
The stated maximum payload volume in metric tons (t) include a stability margin of 33 % or are calculated at 87 % of the hydraulic lifting force in accordance with ISO 10567 standard. These values apply at the jib end when the boom-jib system is in the optimal position.

a = dozer lowered. b = in travel position. q = laterally. l =

TRANSPORT DIMENSIONS



Boomsystem	C 94.5i with D 94.15 i	C 94.6 i with D 94.16 i
Length A	15100	16800
Height B	3460	3460



Lowloader transport

ACCESSOIRES	Type	Capacity (SAE)	Width	Width completely open grab	Weight
		l	mm	mm	kg
Bulk grab	E 94.53	2500	2000	2640	2000
Orange peel grab	E 94.50	1100	open	2890	1580
	E 94.51	1100	half closed	2890	1720
Log grab	E 94.60	1.2 m ²	720	2750	1800
	E 94.61	1.2 m ²	820	3100	2300
Quick release equipment linkage	T 82				122
	T 832				126
Grab rotator	E 832				180
Grab rotating device					
	T 713				25

Dimensions quoted without commitment

(for further options please see accessoires leaflet)



ATLAS-TEREX GmbH
 Atlasstraße 6 · D-27777 Ganderkesee
 Tel. ++49 (0)42 22/ 954-0 · Fax ++49 (0)42 22/ 954-343
 info@atlas-terex.de · www.atlas-terex.de

Dealer: